

ALL NEW MODEL! Lifting Magnet

ELM Series



Convenient and efficiency for makes more profit



Light weight
Less dimension
Lower price

PATENT NO. 241397



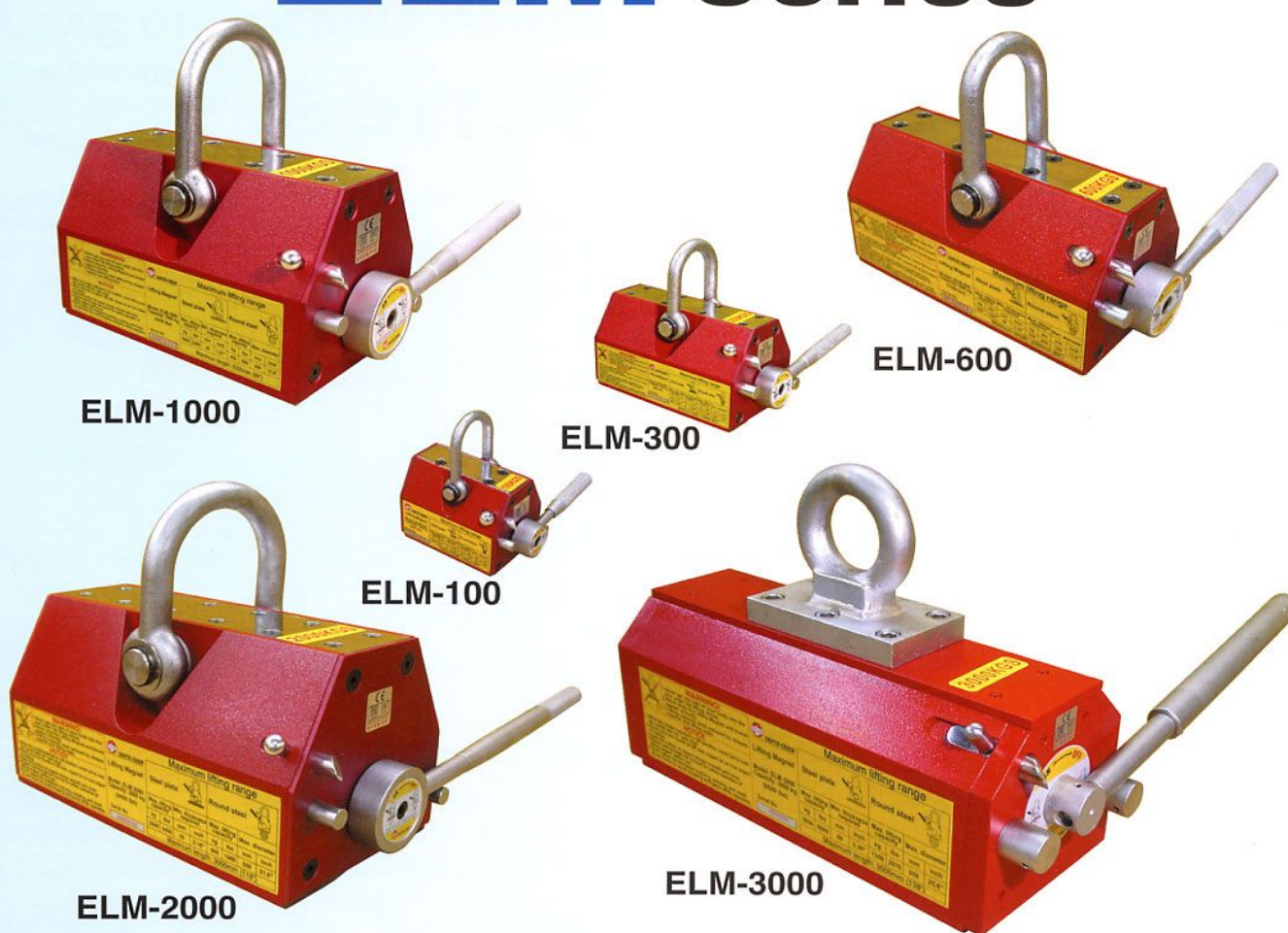
Safety Coefficient
3.5 times!

More power. More safety

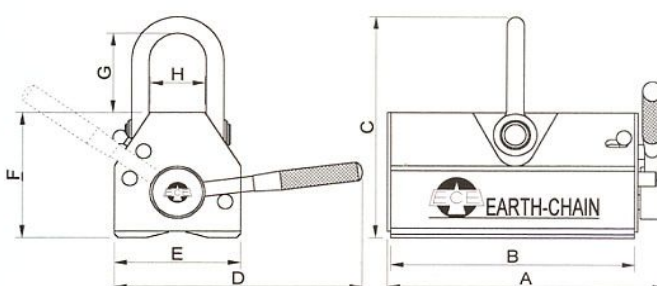


EARTH-CHAIN
BUILT FOR SPEED

ELM Series



6 models are available



DIMENSIONS

MODEL	Capacity		A		B		C		D		E		F		G		H		Weight		SAFETY COEFFICIENT
	kg	lbs	mm	inch	mm	inch	mm	inch	mm	inch	mm	inch	mm	inch	mm	inch	kg	lbs			
ELM-100	100	220	107	4.2	84	3.3	120	4.7	125	4.9	60	2.4	71	2.8	41	1.6	30	1.2	2.5	5.5	X 3.5 times
ELM-300	300	660	180	7.1	155	6.1	156	6.1	185	7.3	90	3.6	93	3.7	51	2.0	41	1.6	8.6	18.9	
ELM-600	600	1320	255	10	224	8.8	212	8.3	260	10.2	115	4.5	120	4.7	77	3.0	52	2.0	21	46	
ELM-1000	1000	2200	280	11	245	9.6	286	11.3	371	14.6	165	6.5	169	6.7	97	3.8	87	3.4	46	101	
ELM-2000	2000	4400	422	16.6	380	15	348	13.7	512	20.2	216	8.5	215	8.5	105	4.1	121	4.8	118	259	
ELM-3000	3000	6600	566	22.3	530	20.9	400	15.7	770	30.3	216	8.5	222	8.7	147	5.8	80	3.2	181	399	

ELM Series

FEATURES

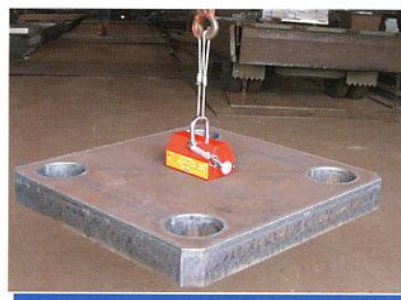
- Made by "Rare Earth" magnet with technology of improvement.
- All new models with "light weight" "less dimension" and "lower price".
- Made by permanent magnet, require no power supply, thus eliminating hazards due to failure wiring system as electric type.
- It features powerful magnetic force, with 3.5 times safety coefficient makes more safety in use.

APPLICATIONS

Suitable for move plate steel, block steel and round steel, such as machine parts, press molds, plastic molds and iron materialetc.



EXAMPLE IN USE



OPERATIONS

With ON/OFF switch, it is very easy and convenient to operate. See as the example pictures as below.



ON



OFF

Notice: Never moves the handle to "ON" side, except on an iron object of holding.

ELM Series

LOAD OF HOLDING POWER

The load of holding power will changes depending on the thickness, attractive face roughness and quality of material and clearance between the workpiece with magnet. (See as the graphs as below)

Chart of difference in holding power by thickness

Thickness	Percentage of lifting capacity						
	mm	inch	ELM-3000	ELM-2000	ELM-1000	ELM-600	ELM-300
T1	up 60	up 2.36"	100%	100%			
T2	55	2.16"	95%	100%			
T3	50	1.97"	90%	95%	100%		
T4	45	1.77"	85%	90%		100%	
T5	40	1.57"	80%	85%			100%
T6	35	1.38"	70%	75%	90%		
T7	30	1.18"	60%	65%	80%		
T8	25	0.98"	50%	55%	70%	90%	
T9	20	0.79"	40%	45%	60%	75%	90%
T10	15	0.59"	30%	35%	50%	60%	70%
T11	10	0.39"	20%	25%	35%	45%	50%
T12	5	0.20"	10%	15%	20%	25%	30%

Chart of difference in holding power by attractive face roughness For all models

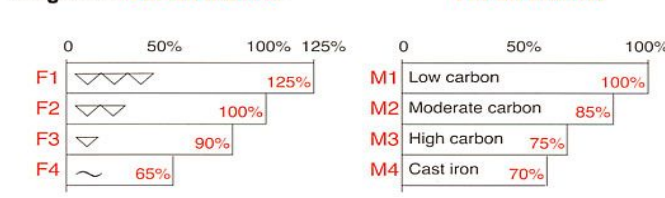
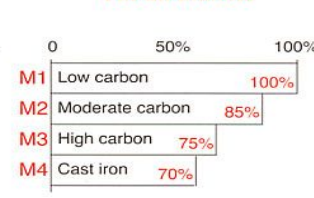


Chart of difference in holding power by material quality For all models



Calculating Formula for "Range of Lifting Capacity" → (TxFxMxCapacity of Lifter)

Example:
Terms of workpiece: T8, F1 and M2
90% x 125% x 85% x 600kg (ELM-600)=573KG

SAFETY COEFFICIENT x 3.5 times

The capacity of magnet indicated as 1/3.5 times of lifting power, it means the real holding power is 3.5 times of capacity. For example of ELM-600 is 600kg (1320lbs) but the real holding power is 2100kg (4620lbs).

The large safety coefficient is consideration for ensuring the use in safety.

MAXIMUM LIFTING RANGE

Form of material	Steel plate				Round steel			
	Max. lifting capacity		Min. thickness required		Max. lifting capacity		Max. diameter	
MODEL	kg	lbs	mm	inch	kg	lbs	mm	inch
ELM-100	100	220	15	0.59"	45	99	150	5.9"
ELM-300	300	660	25	0.98"	135	300	250	9.8"
ELM-600	600	1320	30	1.18"	270	600	350	13.8"
ELM-1000	1000	2200	40	1.57"	450	990	450	17.8"
ELM-2000	2000	4400	55	2.16"	900	1980	550	21.6"
ELM-3000	3000	6600	60	2.36"	1350	2970	650	25.6"
								Maximum length
								mm
								inch

The above diagrams is only for reference. The operator should be test and check if it is in safe range before lift away the workpiece of steel. Other wise, it will be not responsibility by producer for any accidents.



EARTH-CHAIN ENTERPRISE CO., Ltd.
No.54, Alley 85, Shan-Tiaur-Tzuhn Lane, Jung-Chi RD., Sha-Luh 433, Taichung Taiwan
Tel:+886-4-2665-6767 (4 Lines) Fax:+886-4-2665-3712
E-mail:ece.richard@msa.hinet.net Web-site:www.earth-chain.com.tw