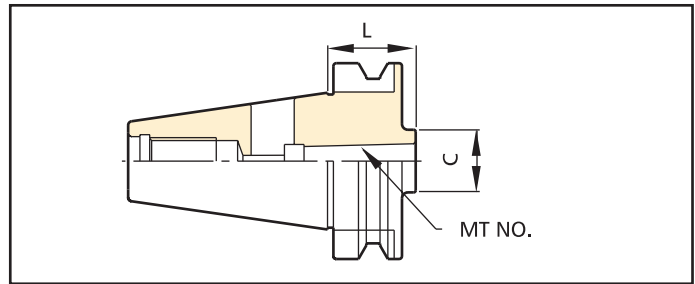


Morse Taper Adaptors



**Features:**

- For adapting drills with Morse Taper Shank (DIN 228 Form B).

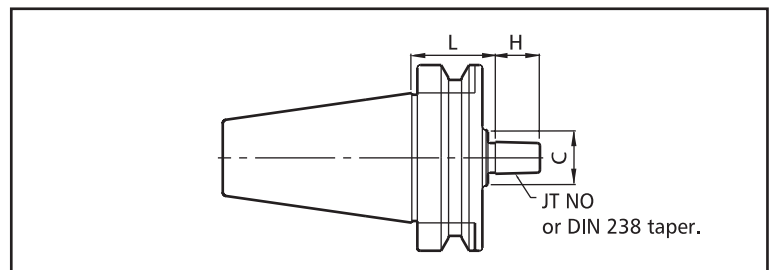


Taper Shank	Ordering Code	Type of Holder	MT No.	L	C
BT30	0-330210-102	BT30-MTA1-45	1	45	25
	-202	-MTA2-60	2	60	32
	-302	-MTA3-80	3	80	40
BT40	0-340210-102	BT40-MTA1-45	1	45	25
	-104	-MTA1-120		120	
	-202	-MTA2-45	2	45	32
	-204	-MTA2-120		120	
	-302	-MTA3-75	3	75	40
	-304	-MTA3-135		135	
-402	-MTA4-90	4	90	50	
BT50	0-350210-102	BT50-MTA1-45	1	45	25
	-104	-MTA1-120		120	
	-106	-MTA1-180		180	
	-202	-MTA2-45	2	45	32
	-204	-MTA2-135		135	
	-206	-MTA2-185		185	
	-302	-MTA3-60	3	60	40
	-304	-MTA3-150		150	
	-306	-MTA3-180		180	
	-402	-MTA4-75	4	75	50
	-404	-MTA4-180		180	
	-502	-MTA5-105	5	105	65
-504	-MTA5-210	210			

Drill Chuck Adaptor



- JACOBS taper and DIN 238 taper



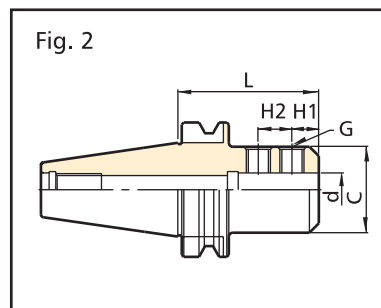
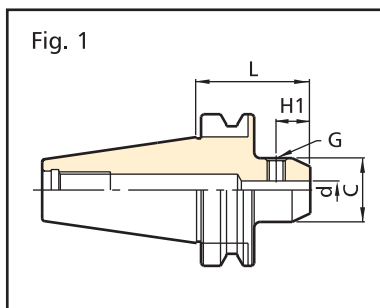
Taper Shank	Ordering Code	Type of Holder	Taper No.	H	L
BT30	0-330200-102	BT30-JTA1-45	JT1	15	45
	-602	-JTA6-45	JT6	24	45
BT40	0-340200-602	BT40-JTA6-45	JT6	24	45
	0-340360-402	-B16 -45	DIN238 B16	29	45
BT50	0-350200-602	BT50-JTA6-45	JT6	24	45
	-604	-JTA6-105	JT6	24	105
	0-350360-402	-B16 -45	DIN238 B16	29	45

End Mill Holder



**Features:**

- For clamping the End Mill with DIN 1835 Form B shank.
- The End Mill Holders are supplied with set screws which are made according to DIN 1835 B-M14x16.



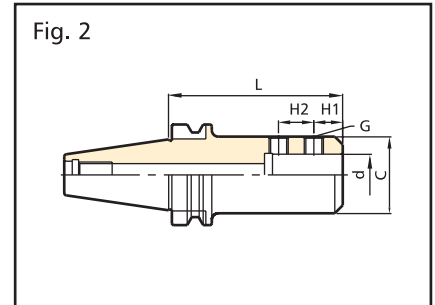
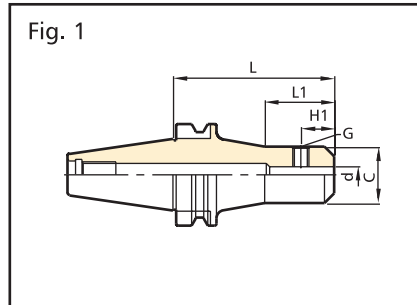
Taper Shank	Ordering Code	Type of Holder	Fig.	d	L	C	H1	H2	G	
BT30	0-330160-062	BT30-SL6 -60	1	6	60	25	18	-	M6	
	-082	-SL8 -60		8		28	18		M8	
	-102	-SL10-60		10		35	20		M10	
	-122	-SL12-60		12		42	22.5		M12	
	-162	-SL16-75		16		48	24		M14	
	-202	-SL20-75		20		52	25		M16	
BT40	0-340160-062	BT40-SL6 -75	1	6	75	25	18	-	M6	
	-082	-SL8 -75		8		28	18		M8	
	-102	-SL10-75		10		35	20		M10	
	-122	-SL12-75		12		42	22.5		M12	
	-162	-SL16-75		16		48	24		M14	
	-202	-SL20-75		20		52	25		M16	
	-252	-SL25-90	2	25	90	60	24	25	M16	
	-322	-SL32-90		32				28	M16	
BT50	0-350160-062	BT50-SL6 -105	1	6	105	25	18	-	M6	
	-082	-SL8 -105		8		28	18		M8	
	-102	-SL10-105		10		35	20		M10	
	-122	-SL12-105		12		42	22.5		M12	
	-162	-SL16-105		16		48	24		M14	
	-202	-SL20-105		20		52	25		M16	
	-252	-SL25-105	2	25	105	60	24	25	M16	
	-322	-SL32-105		32				72	28	M20
	-402	-SL40-120		40				120	27	
	-422	-SL42-120		42					30	

*always better*

End Mill Holder

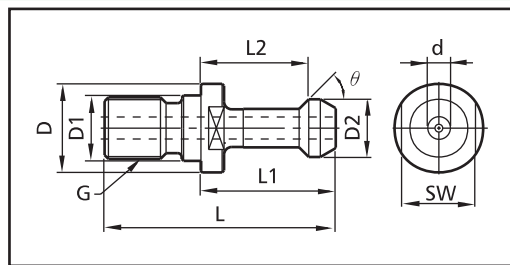
**Features:**

- Extra-length extension design.
- For clamping the End Mill with DIN 1835 Form B shank.
- The End Mill Holders are supplied with set screws which are made according to DIN 1835 B-M14x16.



Taper Shank	Ordering Code	Type of Holder	Fig.	dh6	L	C	H1	H2	G
BT40	0-340160-066	BT40-SL6 -120	1	6	120	25	18	-	M6
	-086	-SL8 -120		8		28			M8
	-106	-SL10-120		10		35	20		M10
	-126	-SL12-120		12		42	22.5		M12
BT50	0-350160-126	BT50-SL12-150	1	12	150	42	22.5	-	M12
	-166	-SL16-150		16		48	24		M14
	-206	-SL20-150	2	20	200	52	25	-	M16
	-207	-SL20-200							
	-208	-250							
	-256	-SL25-150	25	150	200	60	24	25	M16
	-257	-200							
	-258	-250							
	-326	-SL32-150	32	150	200	72	24	28	M20
	-327	-200							
	-328	-250							
	-427	-SL42-200	42	200	80	30	32	-	-
	-428	-SL42-250							

always better

**MAS P30/40/50**


Ordering Code	Type of Pull Stud	L	L1	L2	D	D1	D2	$\theta$	G	SW
0-330000-100	P30T-1	43	23	18	16.5	12.5	11	45°	M12	13
-200	P30T-2							60°		
0-340000-100	P40T-1	60	35	28	23	17	15	45°	M16	19
-200	P40T-2							60°		
-300	P40T-90							90°		
0-350000-100	P50T-1	85	45	35	38	25	23	45°	M24	30
-200	P50T-2							60°		
-300	P50T-90							90°		

**MAS P40/50**

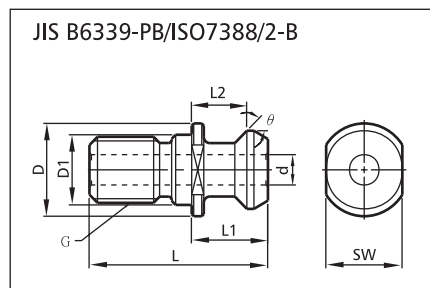
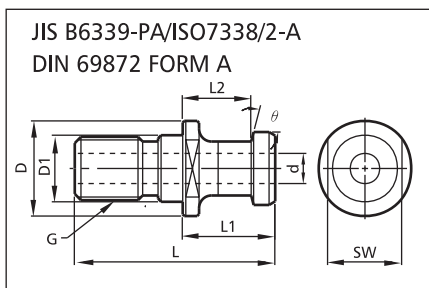
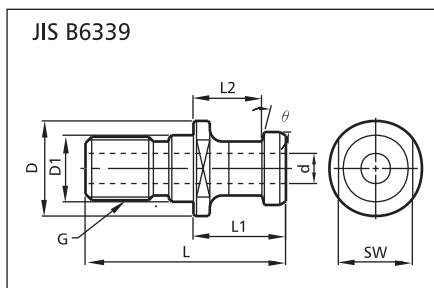
- With coolant hole .



Ordering Code	Type of Pull Stud	L	L1	L2	D	D1	$\theta$	G	d	SW
0-340000-144	P40T-1H	60	35	28	23	17	45°	M16	4	19
-244	P40T-2H						60°			
-344	P40T-3H						90°			
0-350000-145	P50T-1H	85	45	35	38	25	45°	M24	5	30
-245	P50T-2H						60°			
-345	P50T-3H						90°			

**JIS B6339 P/PA/PB**

- With through hole for internal coolant.
- Type P is for Standard MAS BT tool holders.
- Type PA & PB is for DIN69871A tool holders.



Ordering Code	Type of Pull Stud	L	L1	L2	D	D1	d	$\theta$	G	SW
0-340000-401	JIS B6339-40P	54	29	23	23	17	7.0	75°	M16	29
0-350000-401	JIS B6339-50P	74	34	25	28	25	10	75°	M24	30
0-340000-404	JIS B6339-40PA	54	26	20	23	17	7.0	75°	M16	19
0-350000-404	JIS B6339-50PA	74	34	25	36	25	11.5	75°	M24	30
0-340000-403	JIS B6339-40PB	44.5	16.4	11.15	22.5	17	7.35	45°	M16	19
0-350000-403	JIS B6339-50PB	65.5	25.55	17.95	37	25	11.55	45°	M24	30