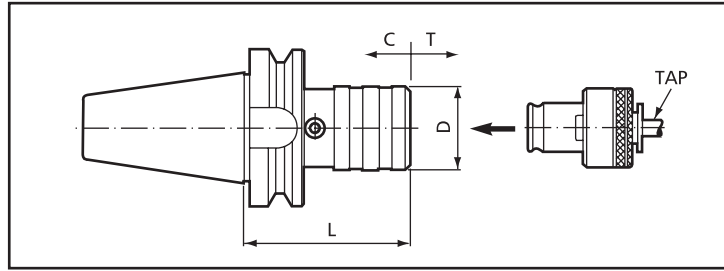


MAS BT Shank

Type THLK

- With length compensation on compression and extension.

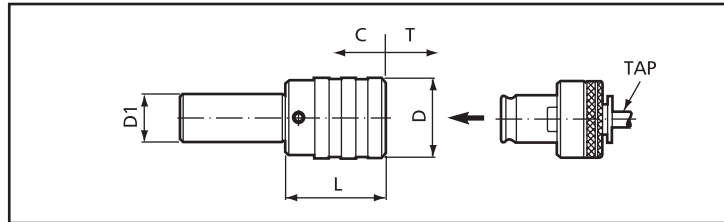


Shank	Ordering Code	Type of Holder	Size of Tap Collet	Tapping Capacity	D	L	C	T
BT30	0-330710-102	BT30-THLK115	1	M3-M12	36	57	6	12
	0-330710-202	BT30-THLK225	2	M8-M22	53	95	12.5	12.5
BT40	0-340710-102	BT40-THLK115	1	M3-M12	36	62	6	12
	0-340710-202	BT40-THLK225	2	M8-M22	53	93.5	12.5	12.5
	0-340710-302	BT40-THLK340	3	M16-M38	78	164	20	20
BT50	0-350710-102	BT50-THLK115	1	M3-M12	36	71	6	12
	0-350710-202	BT50-THLK225	2	M8-M22	53	102.5	12.5	12.5
	0-350710-302	BT50-THLK340	3	M16-M38	78	142	20	20

Cylindrical Shank

Type THLK

- With length compensation on compression and extension.

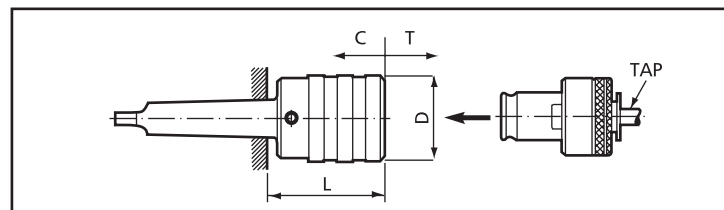


D1	Ordering Code	Type of Holder	Size of Tap Collet	Tapping Capacity	D	L	C	T
20	0-329710-122	BC20-THLK115	1	M3-M12	36	41.5	3	12
32	0-329710-232	BC32-THLK225	2	M8-M22	53	70	12.5	12.5

Morse Taper Shank

Type THLK

- With length compensation on compression and extension.



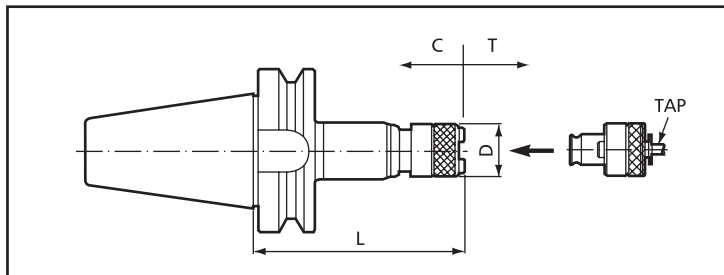
Shank	Ordering Code	Type of Holder	Size of Tap Collet	Tapping Capacity	D	L	C	T
MT2	0-362710-002	MT2-THLK012	0	M3-M8	25.5	40	3	9
	0-362710-102	MT2-THLK115	1	M3-M12	36	41.5	3	12
MT3	0-363710-102	MT3-THLK115	1	M3-M12	36	41.5	3	12
	0-363710-202	MT3-THLK225	2	M8-M22	53	70	12.5	12.5
MT4	0-364710-102	MT4-THLK225	2	M8-M22	53	71	12.5	12.5
	0-364710-202	MT4-THLK340	3	M16-M38	78	104	20	20
MT5	0-365710-302	MT5-THLK340	3	M16-M38	78	105	20	20

MAS BT Shank

Type THL



- With length compensation on compression and extension.



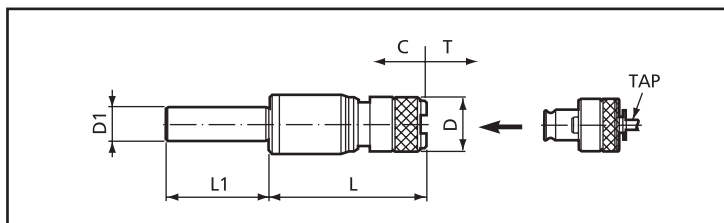
Shank	Ordering Code	Type of Holder	Size of Tap Collet	Tapping Capacity	D	L	C	T
BT40	0-340720-102	BT40-THL125-7	1	M3-M12	35	120	7	18
	0-340720-202	BT40-THL240-20	2	M8-M22	50	166	20	20
	0-340720-302	BT40-THL340-20	3	M16-M38	72	201	20	20
BT50	0-350720-102	BT50-THL125-7	1	M3-M12	35	126	7	18
	0-350720-202	BT50-THL240-20	2	M8-M22	50	166	20	20
	0-350720-302	BT50-THL340-20	3	M16-M38	72	201	20	20
	0-350720-402	BT50-THL450-25	4	M22-M48	95	232	25	25

Cylindrical Shank

Type THL



- With length compensation on compression and extension.



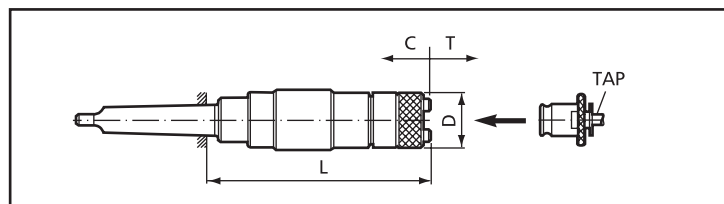
D1	Ordering Code	Type of Holder	Size of Tap Collet	Tapping Capacity	D	L	L1	C	T
20	0-329720-122	BC20-THL125-7	1	M3-M12	35	92	60	7	15
32	0-329720-232	BC32-THL240-20	2	M8-M22	50	166	70	20	20

Morse Taper Shank

Type THL



- With length compensation on compression and extension.

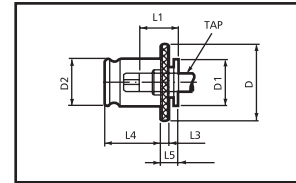


Shank	Ordering Code	Type of Holder	Size of Tap Collet	Tapping Capacity	D	L	C	T
MT1	0-361720-015	MT1-THL030-15	0	M3-M8	23	105	15	15
	0-361720-020	MT1-THL030-20				110	20	10
MT2	0-362720-120	MT2-THL140-20	1	M3-M12	35	138	20	20
	0-362720-130	MT2-THL140-30				143	30	10
MT3	0-363720-220	MT3-THL240-20	2	M8-M22	50	157	20	20
	0-363720-230	MT3-THL240-30				167	30	10
MT4	0-364720-320	MT4-THL340-20	3	M16-M38	72	204	20	20
	0-364720-330	MT4-THL340-30				214	30	10
MT5	0-365720-430	MT5-THL460-30	4	M22-M48	95	260	30	30

always better

Type TC•B

without safety clutch



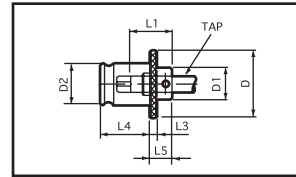
Code:0-30X700-1XXXX

Size	Ordering Code	Adapter size	D	D1	D2	L1	L3	L4	L5
TC0	0-300700-10XXX	0	22	12.5	13	15	4	19.5	7
TC1	0-300700-11XXX	1	30	19	19	17	4	21.5	7
TC2	0-300700-12XXX	2	48	30	31	30	5	35	11

• Please see next page for Tap code to get complete ordering code. Order example: 0-300700-11012 TCIB/M4 JIS 5 pcs.

Type TC•B(fix)

without safety clutch



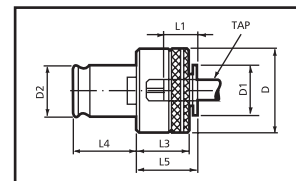
Code:0-30X700-2XXXX

Size	Ordering Code	Adapter size	D	D1	D2	L1	L3	L4	L5
TC0	0-300700-20XXX	0	22	12.5	13	15	4	19.5	12
TC1	0-300700-21XXX	1	30	19	19	17	4	21.5	12
TC2	0-300700-22XXX	2	48	30	31	30	5	35	16
TC3	0-300700-23XXX	3	70	47	48	(44)	6	55.5	19
TCP4	0-300700-24XXX	4	92	60	60	(33)	13	63	38

• Please see next page for Tap code to get complete ordering code. Order example: 0-303700-23026 TC3B (fix)/M12 ISO 5 pcs.

Type TCS•B

with safety clutch



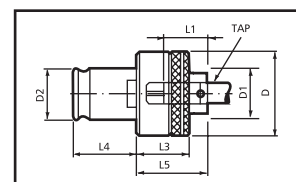
Code:0-30X700-3XXXX

Size	Ordering Code	Adapter size	D	D1	D2	L1	L3	L4	L5
TCS0B	0-300700-30XXX	0	23	12.5	13	15	20	19.5	21
TCS1B	0-300700-31XXX	1	32	19	19	17	25	21.5	25
TCS2B	0-300700-32XXX	2	50	30	31	30	31	35	33

• Please see next page for Tap code to get complete ordering code. Order example: 0-304700-32038 TCS2B/M20 DIN 5 pcs.

Type TCS•B(fix)

with safety clutch



Code:0-30X700-4XXXX

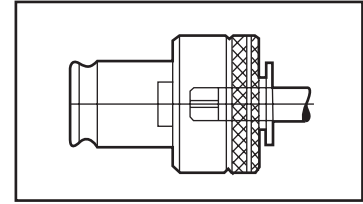
Size	Ordering Code	Adapter size	D	D1	D2	L1	L3	L4	L5
TCS0B	0-300700-40XXX	0	23	12.5	13	15	20	19.5	26
TCS1B	0-300700-41XXX	1	32	19	19	17	25	21.5	31
TCS2B	0-300700-42XXX	2	50	30	31	30	31	35	38
TCS3B	0-300700-43XXX	3	72	47	48	44	41	55.5	50
TCSP4B	0-300700-44XXX	4	95	60	60	(33)	16	63	73

• Please see next page for Tap code to get complete ordering code. Order example: 0-300700-43042 TCS 3B(fix)/ M22 JIS 5 pcs.

Ordering Code Table of TC Tap adapters

Ordering example:

0-300700-42026 TCS2B/M12(Fix) JIS 1pc.
 0-303700-32026 TCS2B/M12 ISO 1pc.
 0-304700-32026 TCS2B/M12 DIN 1pc.



always better

JIS 0-300700-xx0xx

Code	Taps with JIS Shank		Dimensions	
	Metric		Dia. ϕ	Square \square
xx010	M3		4	3.2
xx012	M4 M4.5		5	4
xx014	M5 M5.5		5.5	4.5
xx016	M6		6	4.5
xx018			6.1	5
xx020	M8 M7		6.2	5
xx022	M10 M9		7	5.5
xx024	M11		8	6
xx026	M12		8.5	6.5
xx028			9	7
xx030	M14 M15		10.5	8
xx032			12	9
xx034	M16		12.5	10
xx036	M17		13	10
xx038	M18		14	11
xx040	M20		15	12
xx042	M22		17	13
xx044	M24 M25		19	15
xx046	M27 M26		20	15
xx048	M28		21	17
xx050			22	17
xx052	M30		23	17
xx054	M32		24	19
xx058	M33		25	19
xx060	M35 M34		26	21
xx062	M36 M38		28	21
xx064	M39 M40		30	23
xx066	M42		32	26
xx068	M45		35	26
xx070	M48		38	29
Dimensions of Tap Shank for Pipe Thread				
xx072	PT 1/8"		8	6
xx074	PT 1/4"		11	9
xx076	PT 3/8"		14	11
xx078	PT 1/2"		18	14
xx080			19	15
xx082	PT 3/4"		23	17
xx084			24	19
xx086	PT 1"		26	21
xx088			28	21
xx090	PT 1 1/4"		32	26
xx092	PT 1 3/8"		35	26
xx094	PT 1 1/2"		38	29

DIN 0-304700-xx0xx

Code	Taps with DIN Shank		Dimensions	
	DIN 352	DIN 371	Dia. ϕ	Square \square
xx010	M3	M3	3.5	2.7
xx012	M4	M4	4.5	3.4
xx014	M5	M5	6	4.9
xx016	M6	M6	6	4.9
xx018				
xx020	M8		6	4.9
xx022	M10		7	5.5
xx024		M8	8	6.2
xx026	M12		9	7
xx028		M10	10	8
xx030	M14		11	9
xx032				
xx034	M16	M12	12	9
xx036				
xx038	M18		14	11
xx040	M20		16	12
xx042	M22		18	14.5
xx044	M24		18	14.5
xx046	M27		20	16
xx048				
xx050				
xx052	M30		22	18
xx054				
xx058	M33		25	20
xx060				
xx062	M36		28	22
xx064	M39		32	24
xx066	M42		32	24
xx068	M45		36	29
xx070	M48		36	29
Dimensions of Tap Shank for Pipe Thread, DIN 353				
xx072	G 1/8"		7	5.5
xx074	G 1/4"		11	9
xx076	G 3/8"		12	9
xx078	G 1/2"		16	12
xx080	G 5/8"		18	14.5
xx082	G 3/4"		20	16
xx084	G 7/8"		22	18
xx086	G 1"		25	20
xx088	G 1 1/8"		28	22
xx090	G 1 1/4"		32	24
xx092	G 1 3/8"		36	29
xx094	G 1 1/2"		36	29

ISO 0-303700-xx0xx

Code	Taps with ISO Shank		Dimensions	
	Metric		Dia. ϕ	Square \square
xx010	M3		2.24	1.8
xx012	M4 M3		3.15	2.5
xx014	M5 M4		4	3.15
xx016	M6		4.5	3.55
xx018	M5		5	4
xx020	M8 M6		6.3	5
xx022	M10 M8		8	6.3
xx024				
xx026	M12		9	7.1
xx028	M10		10	8
xx030	M14		11.2	9
xx032				
xx034	M16		12.5	10
xx036				
xx038	M18		14	11.2
xx040	M20		14	11.2
xx042	M22		16	12.5
xx044	M24		18	14
xx046	M27		20	16
xx048				
xx050				
xx052	M30		20	16
xx054				
xx058	M33		22.4	18
xx060				
xx062	M36		25	20
xx064	M39		28	22.4
xx066	M42		28	22.4
xx068	M45		31.5	25
xx070	M48		31.5	25